

Art Illusions

Learning Objective:

To explore how artists use foreshortening to create perspective.





Why is one of this superhero's hands so much bigger than the other?

This technique is known as foreshortening.

Artists use foreshortening when they want to create the illusion that the person or object is coming straight towards you.

Making the hand larger than the other, and the head, gives the impression it is closer to the viewer.





Have a look at the photos on the slides. How has the angle of the camera affected the proportions and what effect does this have?





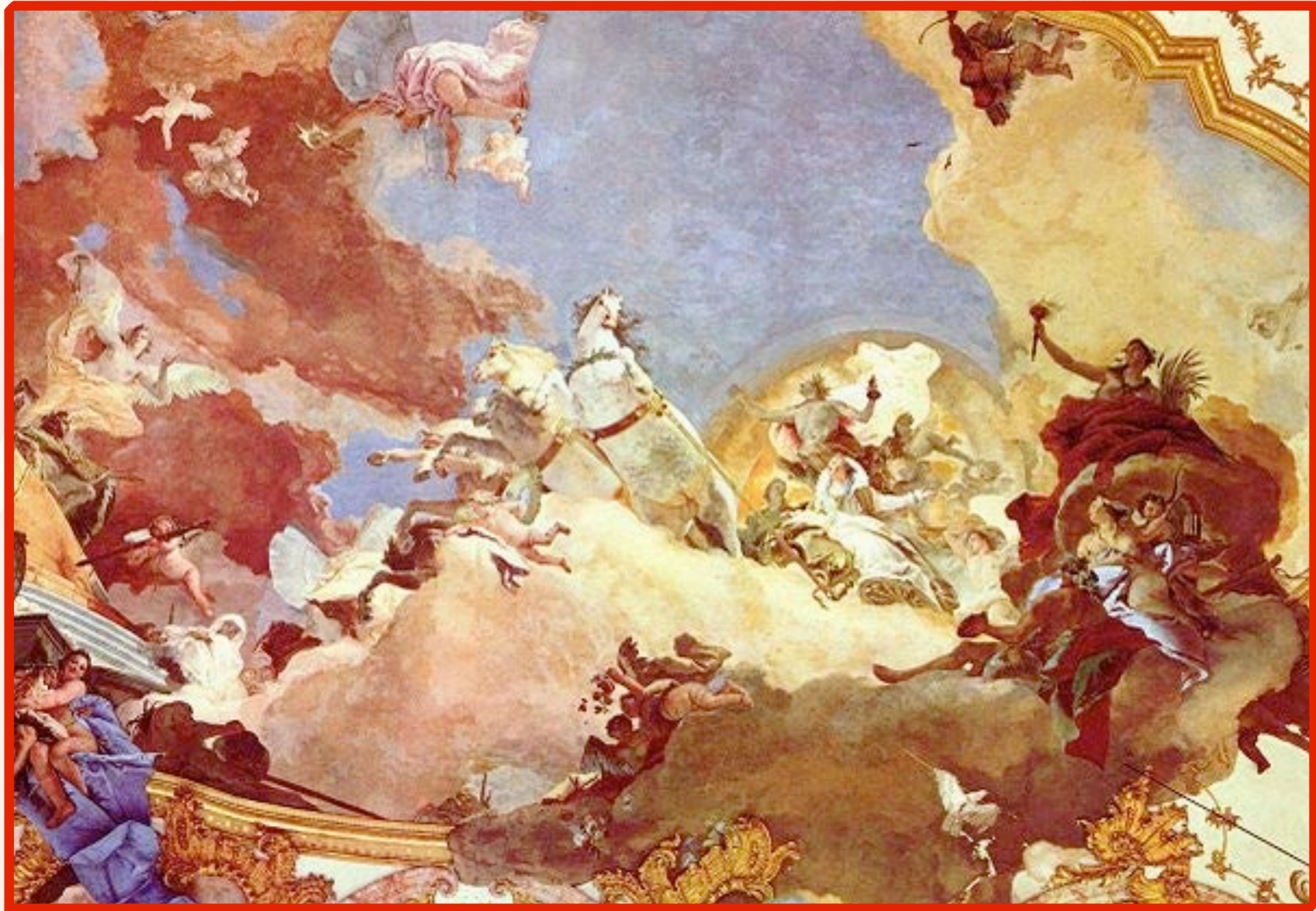
“The lamentation over the dead Christ” Andrea Mantegna, c. 1475



Artists have been using foreshortening for hundreds of years. This painting shows people mourning the death of Jesus.

Can you see how the artist has made Jesus' body much shorter than it actually was to give the illusion he is lying down?

Ceiling fresco by Giovanni Battista Tiepolo, 1751



Have a look at the horses in this picture.
How has the artist used foreshortening?



The idea of foreshortening is really the same idea as the linear perspective we have already looked at. Think vanishing point!



Using a triangle is very helpful if you are drawing a character like a superhero. This helps you locate the vanishing point and keeps all the body parts in proportion.